

ARP-2200AP Series

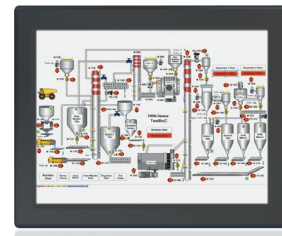
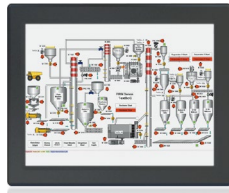
Hazardous Area Panel PCs

- 5-Wire Resistive Touch or Tempered Glass
- Black Powder Coated or Stainless Steel Bezel
- Intel Core i7 Mobile ■ 16GB DDR3 SO-DIMM Memory
- Dual Gigabit LAN ■ Up To 1 x Removable 2.5" SATA HDD,
- 1 x PCIe x8



Hazardous Area

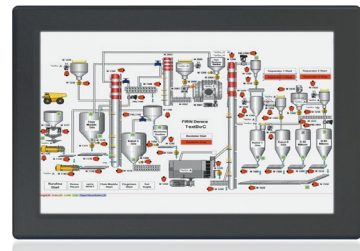
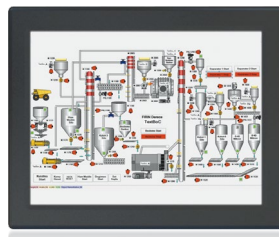
Ivy Bridge Sandy Bridge



PRODUCT SPECIFICATIONS	ARP-2215AP-G01	ARP-2217AP-G01
LCD Display		
Display Size (Diagnol)	15.0 inch	17.0 inch
Resolution	1024 x 768	1280 x 1024
Backlight Lifetime (Hours)	50,000 hours	50,000 hours
Visual Characteristics		
Colors	16.7 millions	16.7 millions
Aspect ratio	4:3	5:4
Viewing angle (V/H)	140° / 160°	160° / 140°
Response time (Typical)	8 ms	30ms
Pixel Pitch (mm)	0.264 x 0.264	0.264 x 0.264
Contrast ratio	700 : 1	800 : 1
Brightness	300 nits	350 nits
Touch Screen		
Technology	5 Wire Resistive	5 Wire Resistive
Touch Rating	35 Million Touches	35 Million Touches
MTBF	490,000 hours	490,000 hours
Interface	USB	USB
Front Bezel		
NEMA 4	Black Powder Coated	Black Powder Coated
NEMA 4x	Stainless Steel (Optional)	Stainless Steel (Optional)
System		
CPU	Intel i7 mobile Processor	Intel i7 mobile Processor
Chipset	Intel QM77	Intel QM77
Memory	Up to 16GB DDR3	Up to 16GB DDR3
Video Controller	INTEL HD Graphics 4000	INTEL HD Graphics 4000
Video Interface	DVI, HDMI. *Support dual displays	DVI, HDMI. *Support dual displays
Storage Option	1 x 2.5" SATA HDD	1 x 2.5" SATA HDD
Compact Flash	N/A	N/A
Keyboard / Mouse	1 x PS / 2 connector	1 x PS / 2 connector
Audio	N/A	N/A
Watchdog Timer	Programmable 1~255 sec	Programmable 1~255 sec
Expansion Slot	1 x PCIe x8	1 x PCIe x8
I/O Communication		
USB Port	4 x USB 2.0, 2 x USB 3.0	4 x USB 2.0, 2 x USB 3.0
Serial Port	3 x RS-232, 2 x RS-232/422/485	3 x RS-232, 2 x RS-232/422/485
IEEE 1394	N/A	N/A
LAN	2 x Gigabit	2 x Gigabit
Parallel	N/A	N/A
GPIO	N/A	N/A
Smart Battery		
External Smart Battery	N/A	N/A
OS Support		
OS Support	Win XP, Win Embedded 7, Win 7 & up	Win XP, Win Embedded 7, Win 7 & up
Power/Thermal Specs		
Power Requirement (Max)	24VDC / 3.54A	24VDC / 3.04A
Power Consumption (Max)	85 W	73 W
Recommended Power Supply	122 W	105 W
Heat Dissipation	290 BTU/hr	250 BTU/hr
Physical Information		
Mounting	Panel Mount	Panel Mount
Net Weight	21 Lbs / 9.5 Kg	24 Lbs / 10.9 Kg
Physical Dimension (W x H x D)	14.51 x 11.80 x 5.51 inch 368.6 x 299.8 x 140.0 mm	15.88 x 13.34 x 5.71 inch 403.4 x 338.8 x 144.9 mm
Recommended Cutout Dimension (WxH)	13.75 x 11.10 inch 349.3 x 281.9 mm	15.07 x 12.51 inch 382.8 x 317.8 mm
Environmental		
Operating Temp	0~50°C (32~122°F), * VHB Version 0~35°C (32~95°F)	0~50°C (32~122°F), * VHB Version 0~35°C (32~95°F)
Storage Temp	-20~60°C (-4~140°F)	-20~60°C (-4~140°F)
Relative Humidity	5% to 95% (non-condensing)	5% to 95% (non-condensing)
IP/NEMA Rating	Bezel meets NEMA 4/4X requirement	Bezel meets NEMA 4/4X requirement
Certification	UL 508, UL Class I Division II	UL 508, UL Class I Division II

Hazardous Area

Ivy Bridge Sandy Bridge



PRODUCT SPECIFICATIONS	ARP-2219AP-G01	ARP-2221AP-G01
LCD Display		
Display Size (Diagnol)	19.0 inch	21.5 inch
Resolution	1080 x 1024	1920 x 1080
Backlight Lifetime (Hours)	50,000 hours	50,000 hours
Visual Characteristics		
Colors	16.7 millions	16.7 millions
Aspect ratio	5:4	16:9
Viewing angle (V/H)	160° / 170°	178° / 178°
Response time (Typical)	30 ms	14ms
Pixel Pitch (mm)	0.294 x 0.294	0.248 x 0.248
Contrast ratio	1000 : 1	1000 : 1
Brightness	450 nits	250 nits
Touch Screen		
Technology	5 Wire Resistive	5 Wire Resistive
Touch Rating	35 Million Touches	35 Million Touches
MTBF	490,000 hours	490,000 hours
Interface	USB	USB
Front Bezel		
NEMA 4	Black Powder Coated	Black Powder Coated
NEMA 4x	Stainless Steel (Optional)	Stainless Steel (Optional)
System		
CPU	Intel i7 mobile Processor	Intel i7 mobile Processor
Chipset	Intel QM77	Intel QM77
Memory	Up to 16GB DDR3	Up to 16GB DDR3
Video Controller	INTEL HD Graphics 4000	INTEL HD Graphics 4000
Video Interface	DVI, HDMI. *Support dual displays	DVI, HDMI. *Support dual displays
Storage Option	1 x 2.5" SATA HDD	1 x 2.5" SATA HDD
Compact Flash	N/A	N/A
Keyboard / Mouse	1 x PS / 2 connector	1 x PS / 2 connector
Audio	N/A	N/A
Watchdog Timer	Programmable 1~255 sec	Programmable 1~255 sec
Expansion Slot	1 x PCIe x8	1 x PCIe x8
I/O Communication		
USB Port	4 x USB 2.0, 2 x USB 3.0	4 x USB 2.0, 2 x USB 3.0
Serial Port	3 x RS-232, 2 x RS-232/422/485	3 x RS-232, 2 x RS-232/422/485
IEEE 1394	N/A	N/A
LAN	2 x Gigabit	2 x Gigabit
Parallel	N/A	N/A
GPIO	N/A	N/A
Smart Battery		
External Smart Battery	N/A	N/A
OS Support		
OS Support	Win XP, Win Embedded 7, Win 7 & up	Win XP, Win Embedded 7, Win 7 & up
Power/Thermal Specs		
Power Requirement (Max)	24VDC / 3.18A	24VDC / 3.96A
Power Consumption (Max)	77 W	95 W
Recommended Power Supply	109 W	136 W
Heat Dissipation	261 BTU/hr	325 BTU/hr
Physical Information		
Mounting	Panel Mount	Panel Mount
Net Weight	27 Lbs / 12.2 Kg	28 Lbs / 12.7 Kg
Physical Dimension (W x H x D)	17.80 x 14.60 x 5.71 inch 452.1 x 370.8 x 145.0 mm	20.98 x 12.99 x 5.78 inch 533.0 x 330.0 x 146.7 mm
Recommended Cutout Dimension (WxH)	16.98 x 13.78 inch 431.3 x 350.0 mm	19.92 x 12.35 inch 506.0 x 313.7 mm
Environmental		
Operating Temp	0~50°C (32~122°F), * VHB Version 0~35°C (32~95°F)	0~50°C (32~122°F), * VHB Version 0~35°C (32~95°F)
Storage Temp	-20~60°C (-4~140°F)	-20~60°C (-4~140°F)
Relative Humidity	5% to 95% (non-condensing)	5% to 95% (non-condensing)
IP/NEMA Rating	Bezel meets NEMA 4/4X requirement	Bezel meets NEMA 4/4X requirement
Certification	UL 508, UL Class I Division II	UL 508, UL Class I Division II